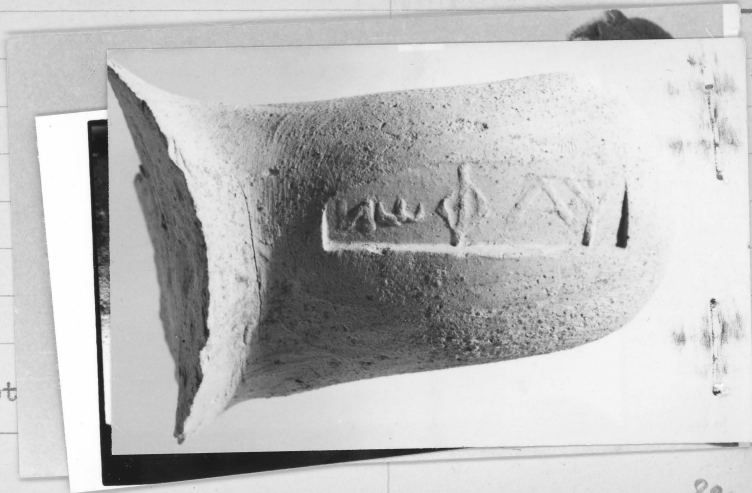


ΨΑΦΩΝ

R



Ψάφων (ret)

I or II

2a

ΨΑΦΩΝ

R



19.36

New.

19.37 (side)

arched  
ang?

Ψάφων (retr.)

Dark bits in clay

I or II

2a

Alexandria VG 650; right

Herm. 33, 859 from Kerck, CR 1859 p. 144 no. 34

Delos: TD 4722

Alex: Benacthi letter 14, 3. XII. 56.

Delos: TD 6953, 1962 Archigesion

Kaunas no. 517, inv. PT-B 9.8.98 w. letter 6. x. 98 f  
from B. Schmaltz

Ad

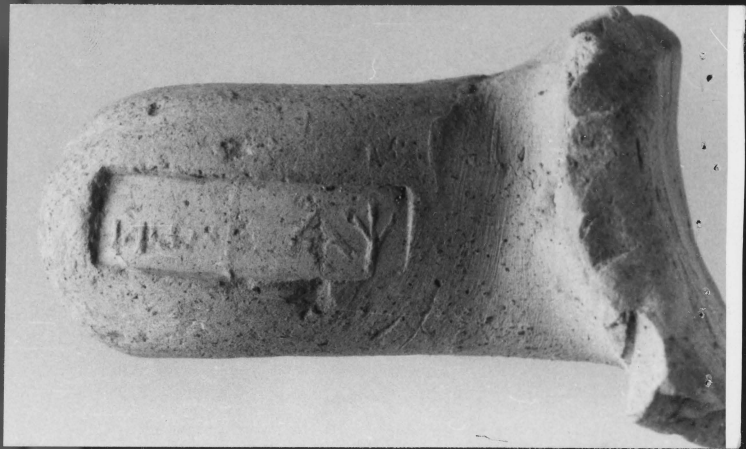
26



19.36

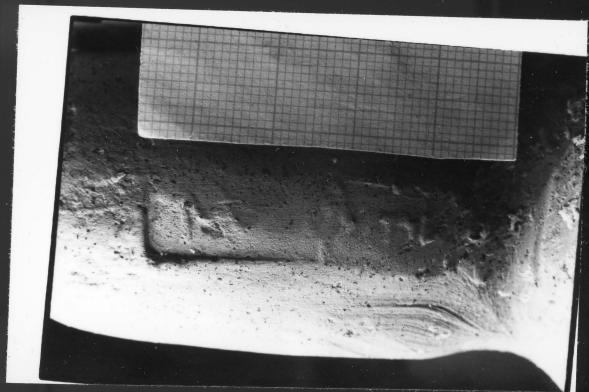
Alex VG 650

20



189.34  
TD 4722

2f





BS II 40

PT-B-9/8/98 not

1 W  $\phi$  A  $\nabla$  karisch?

Ton: nicht rhodis