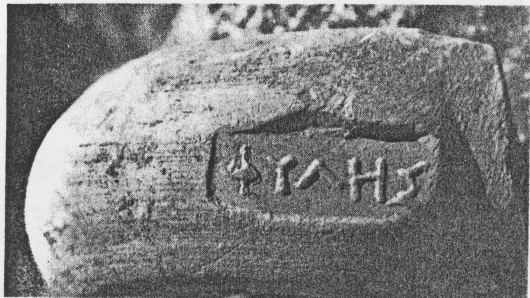


ΦΥΛΗΣ

TD

Φύλης



20

HISARÖNÜ

LM

ΦΥΛΗΣ



Benechi: "ER"

041 x 024

Battered frag. of broad,
arched handle.

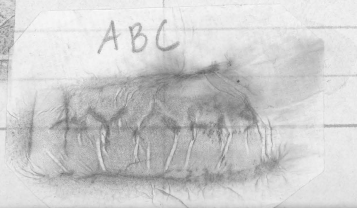
Rather soft red clay
with dark bits.



ABC

Φύλης

1967-58



2a.

Delos : TD 4611

AA

Alex.: Ben. Coll. letter 12 $\frac{1}{2}$. 30.6.58 *

Alex.; AVG 228 $\frac{1}{2}$ (Buff clay - thin rolled iron, may be
↑ not Rhodian. 04/x.023)
[Find also with Sca ϕ o ρ a]

* no of 6. VII. 65 in Alex.; in ABC,
"3 ex., all same die, incl. sun
(rather light - set)

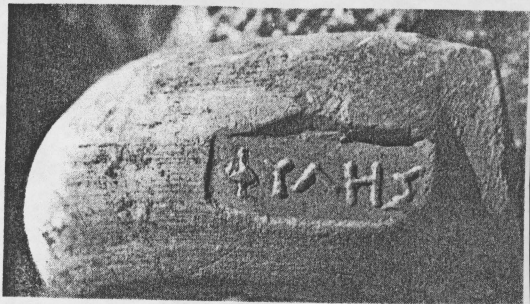
HISARÖNÜ (Datcha, Turkey) 1988, see

EMPEREUR-TUNA 1989, p. 295 no. 20, fig 17.

Samos; Heraion, I 1115 H

Kraunos, Asia Minor (PT. B. 5-7/8/97) N $^{\circ}$ 473
sent by Schmaltz w. letter 10. IX. 97

26



20

HISARÖNÜ



2d



Alex.: Ben. Coll.
brought by L.B.
14. VII. 88

24



NIKO VI.62

532.6

AVG 2287

(side)

2h



3 NIKO VI.62

532.5

AVG 2287

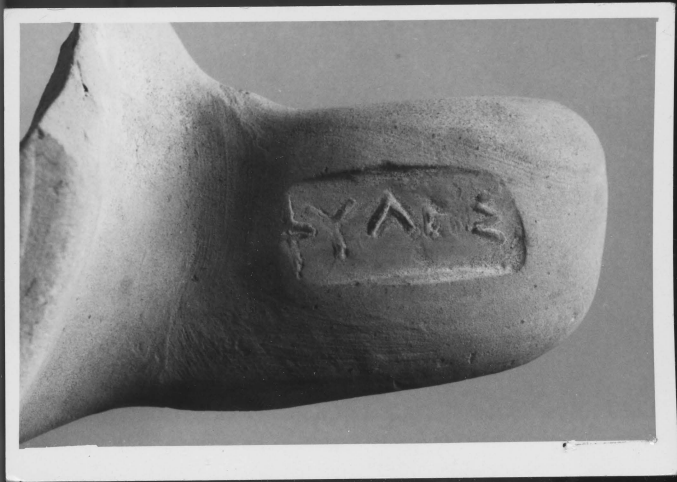
(side)

2i



78

L. 8358 8
(HISARÖNÜ)



532.4
AVG 2287

NIKO VI.62

2n