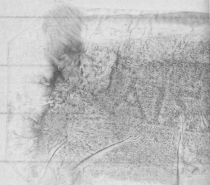


ΦΑΙΣΚΟΣ



Alex: Benachi



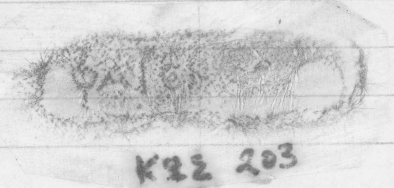
Φαῖσκος

λα

ΦΑΙΣΚΟΣ

R

combined w. Pap. Kyparhos (K2204)
n Job 0200 (28) Same



K22 203

Alex: Venaki 10.8.74, № 620



Job 203

Φαῖσκος

La

Alex. Benachi 10.V.54, No. 620

AD

(diff. die) Alex: Benachi letter 10, 26.XI.56 (photo of stamp and profile)

-KRE 203 (combined w. isp. $\chi\rho\alpha\rho\chi\omicron\varsigma$: KRE 204?)

KRE 207

Miletos: 61, 2

Egypt - Fayum, now in Univ. of Milano no 138
(from photo of Miss L. Criscuolo.) X.81

= Criscuolo 1982, p. 107 no 128, pl. p. 156/28

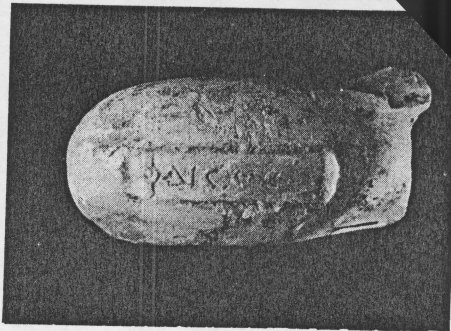
16



413.42

Kos 203

1d



Fayum

128

Criscuolo

11



Alex. Benaceli
letter 10, 26.XI.56

①

BEISA.24

14



py

~~BEA~~

BE/SA.23

(plant, no.)