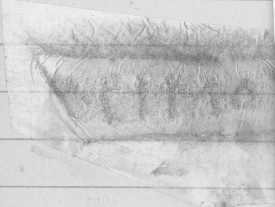


ΧΡΗΣΙΜΟΣ

R



Χρησίμου C
device?



X. 032
Rhodian
Shape
of the
differen-
ces might be from method of
baking? (Clay salmon-red
on interior, smooth, light
brown on exterior surface).



2880

ΧΡΗΣΙΜΟΣ

R



32

2880;

"Shaly, may be
Orange clay with

grey core; buff slip."

Χρησίμου C = Σ

twice?

La

E.M. Χρήσιμος EM 1

SS 2880 - K, 25/0 below 64. -ca 3m. Early Roman context

Italy; Taras (Taranto): IG XIV, 2393, 521 α, β

Athens; Excav. S. of Acropolis in 1954, no. NAA 606

Athens (west slope), Pridik 1896, p. 137 no 81



PHICIMOT

NIKO VII.68

676.27

NAD 606/57

1d



Agfo

EMILE X.64

629.19

Xφίβικος

EM 1

1911

14

.041 X .032

Possibly

late Rhodian

(?) Shape

of handle and rim profile correspond. Clay differences might be from method of baking? (Clay salmon-red on interior, smooth, light brown on exterior surface).

early Roman context

14





12