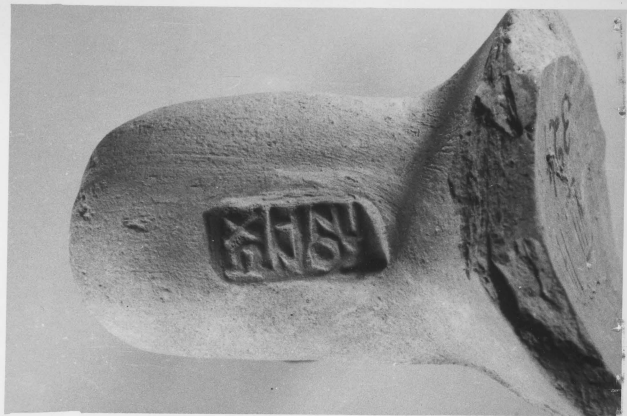


ΧΗΝΙΩΝ



3736

Χηνί-
ωνος



766

Na



3736



K 324: ? twisted ang. handle. Red
clay.

Xnvi-
wvog

Prague ex: Late, small, sharply
rising and sharply bent
Rim, thin roll

766

Na

55-3736-II

Kerameikos 324; left KGA 1141

Delos - TD 2288, 2761, 5139 (^{Xmvi 2?}_{wrov}), 5762

Not a print up - Athens of J. Boardman

? Rhodes: I.G. XII, 1 no. 1306, 2 (B.M.) ~~wanted~~ = Zinv

Smyrna = Prague, Coll. of Faculty of Class. Archaeology, Charles Uni.
versity from Salaz Coll. see note by V.G. 9.III.70
on a sticker: 45a (same Smyrna, Salaz;
see letter 8.IV.88 from J. BOUZEK)

Smyrna: see Holwerda, Leiden Mus. cat. (1936),
p. 69, no 1062, pl. XII

Pergamon AS 767 from a cast shown to us
XII.94 by Buraw



PV

165.15

Kerameikos 324

NIKO 2 62