

Erchson 1894

30

Is it an altar Yes.

Traces of burning

Date of temple & theatre

Object of bottomless pit

New top layers better material

Schutzschicht over all in sand

Look again at front opening
over cross pieces.Wed W 23
Th "

Decor. Rhony Inty II 272

245	
112	
133	
110	
5	580

[1]

[2]

Excavations in Eestria.
in May 1894.

Began with 66 workmen,
33 from Chalkis, at 3.50
hrs a day May 7 Monday
after 4 days waiting for
holidays, to pass and for
men to be found.

First day was a good start
found a temple to west and
west of stage building.

Dimensions not yet determined
Aphrodite head of statuette in
marble found near west end
of temple.

Piece of Doric column, small
with stones.



Position of temple

Phillips had the luck to
miss the temple. Cass
walked to the east and proved
that no building existed there
in the rear of the stage.

Peabody dug the street in the
rear of the Nautika School.

May 8. People foundation
laid base. Peabody
found old walls under those
that appeared, and rooms
lined up along a street.
One at the end with a marble
door sill at the end with iron
iron for door casing, etc.

9 May, up to across
dug trench 50 ft long

2-5 ft deep with cross
sections, on principal
plain surface of across.
Satisfied that no foundations
exist there. Touched bottom
in places. Nothing found but
counters tile fragments and base
frag of rough kind.

One piece of Doric fluted
column with traces
of pions.

This on east side
Several small houses opening
to east down hill.

Frag of pottery in there, but
nothing interesting.

I dug in 3 of these.
What a place for pottery
and no buildings.

On South side in trench one
small frag with dull point.
Not big enough to make out figures.

[5]
Temp always = sunny
Polygonal lower part since '91

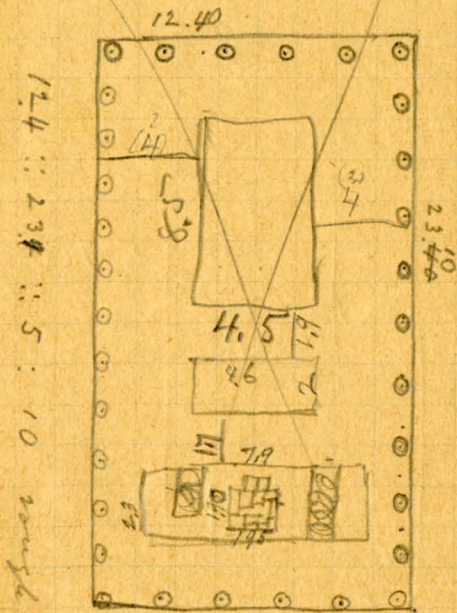
Big pit south of Temple
right up next to side
10 ft deep with steps cut
in two opposite walls

3 layers to the stones -
base of temple.

Water pipe down from north
runs by N.W. cor of temple
One joint with a band of lead.

Don't forget Peribolos wall
to south and steps down

[6]
Dionysos Temple in Euxine
May 11, 1894.



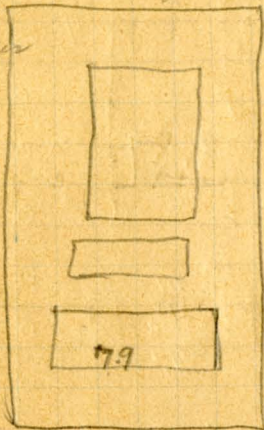
12.40 :: 2.34 :: 5 : 10 rough estimate

75 ft x 40 ft roughly.
Cols. 3 ft in diam.
 $69 \div 10 = 34 \div 5$ roughly,
6.8 interval dist.
Nearly $2\frac{1}{3}$ Cols of stones

West
 Corner Corner
 South
 Wall West
 East
 Wall East
 South
 Wall South
 West
 Wall West

Depth of Poros layer of chips
on north side of temple .30

Thin layer
on S. side



Depth of
Platform $4\frac{1}{2}$
1.35

No regular alternation of layers of Poros
see numbers tower

Stone	93 x 133	1.0 x 1.10
	75 x 137	1.2 x 1.06
	65 x 70 77 x 133	.99 1.03
	65 x 68 x 130	
	65 x 140	

At East of Kotroni
Rough stone.



KAEITOS

May 14 Monday

A day of failures at the
foot of Kotroni.
Struck rock everywhere at
slight depth. Many walls
but none of any great solidity.
Plenty of ~~rough~~ coarse
pottery fragments in the ground
and some pieces of glass.
This site is the first place
where serious excavations
have been made with a view
to locating the temple of Aste-
mia Furanyzia.
The place is lovely and I
was impressed in its favor.
The view embraces the bulk
of Poros and a little point of
Routelienus.

Worked with 30 men & two
arts all day.

The Hostons Mr & Mrs come
to see us. Had rain at
dinner-time.

Left Phillips to complete
digging around temple.

In a mine press. near our
excavation

ΠΑΡΑΜΟΝΟΣ
ΠΥΦΩΝΟ-

In wall near Stommatis' House

M -
Δ -

Stommatis says it was
ΜΥΡΙΟΣ
Δαφνιδος

Another day up by us

ΙΠΠΟΚΛΕΙΑ

May 10

Series of water basins
at foot of acropolis.
One at least taken away
I saw one and dug till
I laid him up to the third
Hollowed out of solid stones
Basins 78 cent wide
1.36 long 95 high
Hollow in middle
1.16 by .65
.35 deep

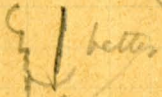
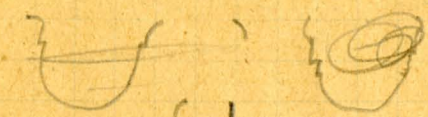
Cut oblong from one basin
12 wide 10 deep .27 long
at top Shaped like this U

Thick coating in feet two
coatings of cement.

Cross section of Stone of ease



Cross section in middle



Last tub marked Δ next on
water supply of entire
pipe by W end of Temple
ancient well at foot
across to east now dry.

Cistern in the town $20 \times 6 \times 6$

Water pipe to north of temple
prob. a branch of that lowest
Set of chimes for a sloa
south of city, Comdry.
What a lot of earth at foot
of acropolis!

Doric column drum



Upper part of
"city Laundry"

"Bottomless Pit"

- Length
- A 137
- B 138
- C 136
- D 137

Hole in each tank a little to
the right of center as
seen on that side
chime is very quiet.

W. side is entirely plain and
smooth, to back it is rough and well

Pyramids. Sat May 19

13 layers to the top
Thickness of layers 16 or 15 inches. Possibly another layer or two taken away as the present top layer is near the surface. Down to bottom

$$1\frac{1}{3} \times 13 = 13 + 4\frac{1}{3} = 17\frac{1}{3} \text{ ft.}$$

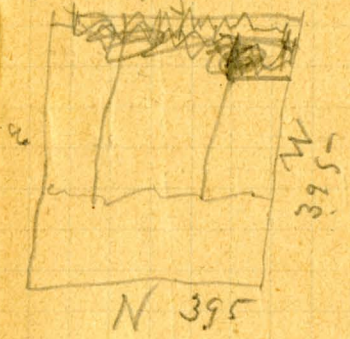
Presumed length of tower on northern side 3.95 + 4 meters
Presumed height 6.05 meters.
Presumed breadth 1.40 at top
Tower prob. square

At bottom prob about 2, not N to South 3.95 some or other.
Single stones dimensions 2
breadth 75 69 65 62 different
Length 1.40 1.10 or different
Pores Thickness ~~4~~ 4.2

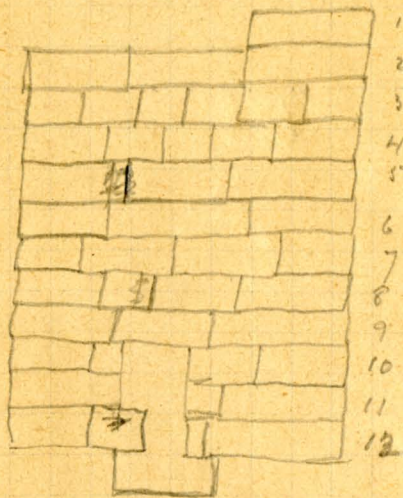
3d layer from top
6 ends to the whole length makes each block average $4\frac{1}{2}$ or $2\frac{2}{3}$ meters

7 or 8 meters deep through some slabs, rock
90 below lowest stone

at bottom layer 130^x190
perhaps not original



Presumably no regular alternation of Länfer & Binder
 Rough sketch of south face after the great breaking
 77)



Measure Water tracks
 Passage between length
 upper blocks, passages.

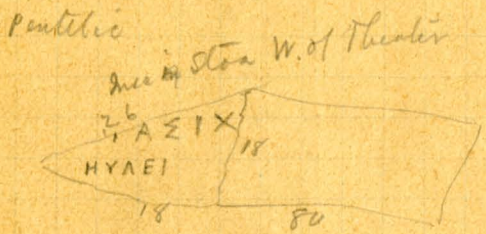
Relation sizes of tracks
 place in front

Sample

13 courses at
 ends by ~~H & S~~ walls
 running N & S.

Temple
Height of separate layers
Big a little under middle

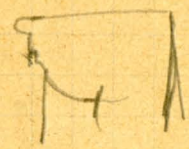
Cups make plan.



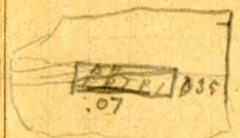
Upper letters .01 high, quite broad.
Lower letters slightly smaller & narrower



Talos
Cross Section.

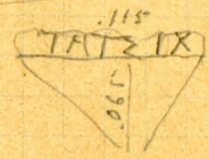
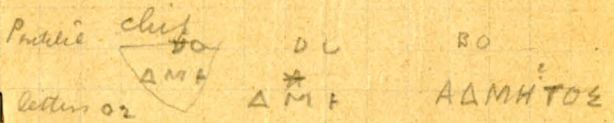


On a tile at W. End of Temple
Convex side. .018 thick
raised letters

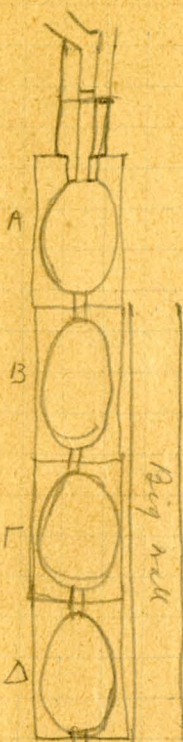


Δ HMO, ^{upper line} doubtful
EPETPI

If Δ HMO is correct
H & M are rounded greatly
Really looks like Δ I M O



Pentelic
letters .01
Restored TAIZIX



Uncovered to here

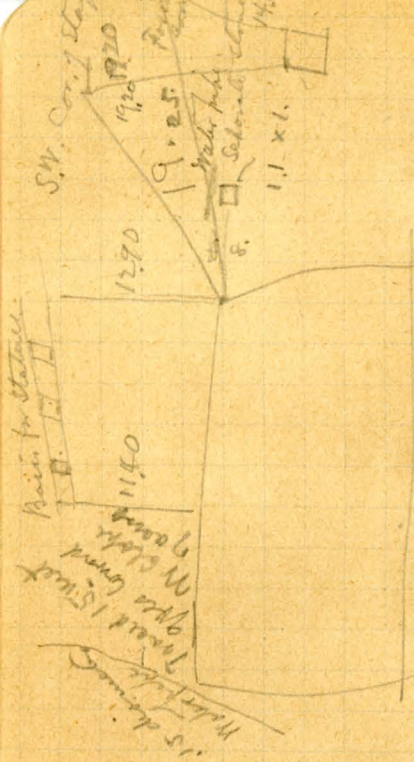
Big well

Remains of the way
as they are the
of fact.

Bad well
at present
of fact.

To hide the
women!

- 1 History.
- 2 Temple.
- 3 Theater.
- 4 Store
- 5 Tubs.
- 6 Waterworks
- 7 Street of houses.
- 8 Former excavations
- 9 Present inhabitants
- 10 Situation
- 11 men laborers
- 12 Dummies
- 13 fortification



From N.E. Cor. of Altar to Freman
 S.W. Cor. of Shrine 14.85
 From N.E. of Temple to Freman S.W. Cor. 2.5

24
 Dorffeld declares our temple unique in having a nearly unblemished platform for a stemobate Baettischer (?) used & put this as the usual thing.

The reason for this was that the distance between outer columns and cella wall was so slight that it did not pay to make two foundations.

Two more layers once over this now remaining part. "Perhaps three" How can this be without throwing things out of proportion in the Lindenberg.

Layers around the temple was a Baanschutticht also over the opening. Could be none over the along the street.

Palmetto Head
at big hole in sternacut
of temple.

Read all Etruscan inscriptions
Compare other ground plans

HYAEC In Urns
Thryakyllos Monument base
Janic Hornum p 268 ff.

Pireach De Musiciis Certaminibus
p 84 ff

Is it likely that the
2 Delphi
Delos
Dodona
Epidaurus (use to
Dionysos)

had anything to do with
Dionysos. Was there any
temple of D there.

Etruria near Tiber
Temple near theater and
altar (?)

Coins from grapes? pl. xxiii. 11
Port. Mus. Cent. Graec. p 122
The ¹²⁰⁻¹²⁴ bull might be Artemis
See my Plattea stone Abhandlung
No. 41 (123) seems almost to make
bull belong to Artemis

Asklep Temple at Epion
C. 6 x 11

* Reston Dörp & Willb
Slats with H .35
Interest of use 2.05

[28]
* Didaskalieu
See Keller Mitt. 104
* Following directly following
C. I. 9. 231

In Sicyon, Chama in honor of
Solomon. Hdt

* Great Chorephorus has a
Eph. Archaloly B, H 13, h. 404 B
Biotto's Burnitt 418
Temple of Apollo, of 81 B
also Plat d. p. 11 line 16 H 12 p 31
Doric Kapthur
Temple of Dionysos in Epion
C. I. 9. 2144
Cyrus of Anaxima
p XXXVI h. 242
Labrousse 1. p. 32

Amynthos = Ngooi
Silpho P. 73.

Enthia to Corymbos & E Coast
Bassier II 418

Dionysos Temple
Not near theater accord to
Cyrine. C.S. 2144 w of.
also Bassier Geog II 420
in place of Mercator & Dionys
on a further sea side

Rhony Hell Ant II. 272 ^{in vase}
(about 150 BC) ^{Inde refers to Dionysos &}

Demeter ^{Antemisia} ^{Phanoplos}
Iskha temple

Rests on Plat Quastropes
Inacia 31 (Plat p 366)

- 4 temple X Apollon course not meeting
- 2 Dionysos in temple
- 3 Demeter
- 4 Ant Amos

Enthia wish to get 40000 drs
as oil fund for byre and
erect statues and give gold crowns
Rhony Antig Hell II 266f

Eph
Gymnas base also (copied)
Rheinisches Mus. 21 p 33 l. 400
Cyrine of Anonon XXXVI No 242
Gemeinst
Eckhel Doct II V 2 p 824
Head of Ant Amos
Antig of Corymbos p 136
Boudard done p 24 verify.

Rhony II No 1232 ^{from Chalkis}
Appends Antemisia Ngooi
no epithet Apaxova here
was in 2146 in next page.
flat thickens! why not in
Antemisia temple?

Bosch C 14 2144 & says
Weather Temple of Artemis
in the city for this ^{was}
was found in the city.

But perhaps Amompe ^{of previous page}
in city story of pompe rest
against it do not say
March out. Is Bousin II p. 42
Lollings identical of Amompe
thrust temple of Art Amompe
not justified. Cf. Amompe
in Attica.

(Tried in one place & found it
in another)

Willowowaty does very well
to say "Amompe ^{lies} relict
an der Stelle." Where?

Scoropus first choice for this
temple of C 14 2144 but Cypria
says this was "in field". Others
(2145) "near theater". Others in theater
or amphitheater "4", 4

Art Area principal
divinity. Inscap in Collety
Cauer.

Straber 448 Topography refers
to the Artemisia (or to
the Dionysia) for that weather

Cauer No 553 [=138] knoche
me out. Why should Euktion
set up stela in Apogrodos
except if their great holy place
was there.

Bousin II 423. Stells Art & lets
inse found in three different
places.

Look up Epid }
Delphi } Heals
Delos }
Dardana } Henry

Art Amongst

Paris 1. 31. 5-

action tree Gwvr 12. 34

Long XXXV. 38. visited

My Conspire

Wishes to 224

April Art lets

= Abonyabe Art Well 1232

apello at Jamyua

Ech Arch B p 325-

Stroke 447

* Ech Arch No 1302

~~the second 4.~~

Art Amongst

Williamovitz Ech Arch 1888

Hdt VIII. 4. Astenios u. Eukleides

an diesem Orte waren
Aussprünge u. d. sehr
am Platze

Makala cried f out on the
streets of Chalkis
We got Egyptians / Stations
and almost Medes & Persians
etc.
"not much through Corcuty
with them"

Antyromos come in contact
with them the first night
Station drank 2 oke of wine
at one session.

Butig of Cery stor 136
Cypria of Anona ^{not 4}

Acu f of Arch. Hellen. Ph.

Eckhel. Corin. I 2 p 358
Dithira. Naxos, II 324

Donders of Lonic p 24

Wollers vertrieb

Recherches Hellen.
Mrs part under Dion

Two miles + a half east of town
 Night under Olympos.
 Negotiations with Billakis.
 Diamond come to town us from
 our subscrip of 500 dr. Grain
 cost only 100.

Keen interest of old men.
 Was it really a tomb?
 Suspicious hollow in top with
 stones lying about.
 Reminds the gully like tomb
 in Adyong with ear on top.
 Palimurus!

Another night on the stone.
 Cross $\frac{1}{2}$ mile back.

Another $\frac{1}{3}$ of a mile still
 farther back. Money in the end
 this ~~was~~ ^{stimulus} had always said
 "Come for me".

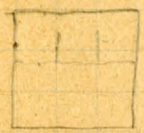
Grave call it "topukas" begging
 the question
 Perhaps watch tower don't piled to
 make it climbable.

Tower due ~~to~~ square with points
of compass, faces N, S, W, E.
Billalis' big family.
80 years best preserved man

Measure to see of square
N to S. 165 + 190
Lenses and Rinds not regularly
alternate. Draw sketch.

N to S 203 + 195

Point of Pentelicon just
appears over the slope of Parnes.
The hills or mountains rising
out from Parnes and forming
the shore of Northern Attica



Dorchester Oct 11 1894
Eretria
Material of Purple breccia
Kalkstein met Kieselstein
from Acropolis

Look up coins for
Drachmas in Eretria

Layers around temple
was Bauschutt mixed with
cement to make a ~~top~~
pavement on north side

Butcher ^{shop} by ^{assumed}
continuous stonework

"*C. montana*" Goodell

Artemis Ananyca
 Willkommung Herms XXI 95
 Welcher Gottheiten I p 551
 Callimachus fol 71.
 Paus I. 31. 4, 5

* Wriech's Reisen II p 249
 Near Bathyra.

" 20 minutes from Khore
 (Coward's Excursion)
 eine kleine Anhöhe mit
 einer zerstörten Kirche
 viele grosse Steine
 im Gebüsch umher.
 Gäbe Strabo nicht die
 kleine Entfernung ^{von}
 7 Stationen von
 Erman an, so würde ich
 glauben dass hier das
 Amorgathische Heiligtum
 gelegen.

Cf Eph Arch A. No 3524
 Also " " B p 382 p 1836

Temple foundation 20 meters from
Theater wholly excavated.

Probably ~~the~~ Temple of Dionysos.

Dimensions 23 by $12\frac{1}{2}$ meters

$1\frac{1}{2}$ deep, three layers. Altar and statue
base

Adjacent water conduit.

~~Sh~~ Shaft three meters deep leads to
underground passage six meters
excavated.

~~A~~ sheet with houses uncovered
One marble head, some pottery ~~found~~.

Horton American Concord.

III Ados Demokritou 11.

Seymour ~~2000~~ ~~Harpa~~ Yale College.

American.

Good Temple foundation near theater entirely excavated. Probably Dionysos.

Altar. Street, Water conduit.

Deep shaft connecting with passage Richmond

[87]

Molten
Belgian
Waldstein

[88]

Ekt two Syzygion
of Sunday May 1 (Greek)
has my telegram to Harla

Also May 7 Greek date
prob by H. Stm (exaggerated)

~~Jan's arrival to Harla~~
~~to Harla from 4 to 5~~

Five signals in Harmonium

110 110 [89]
 8 88
 810 198

~~Constantinos Rhomios~~
 from White

~~Palatis Patis bottle~~
 in Athens

George Sijyl.

Two Chocumades from Billas
 Two (one bad) from little house
 (Two from above nice looking
 one below
 also a two pronged one

Ἀρκετοὶ εἰς Στὶλιν πόλιν.

Sokles Rhomy Anty Hell
 I p 52 53 often.
 also Sokles 53

